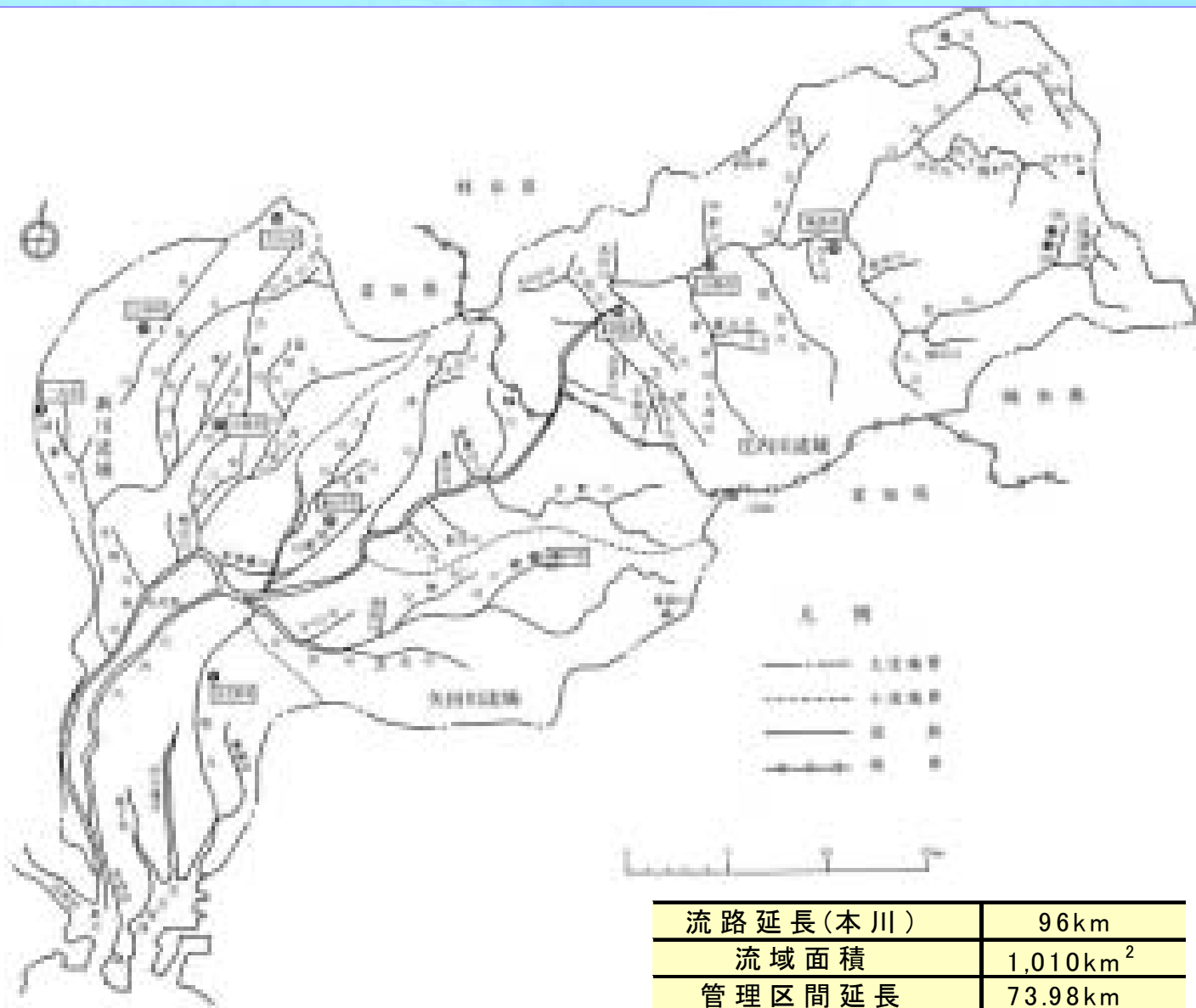


土岐川庄内川の概要



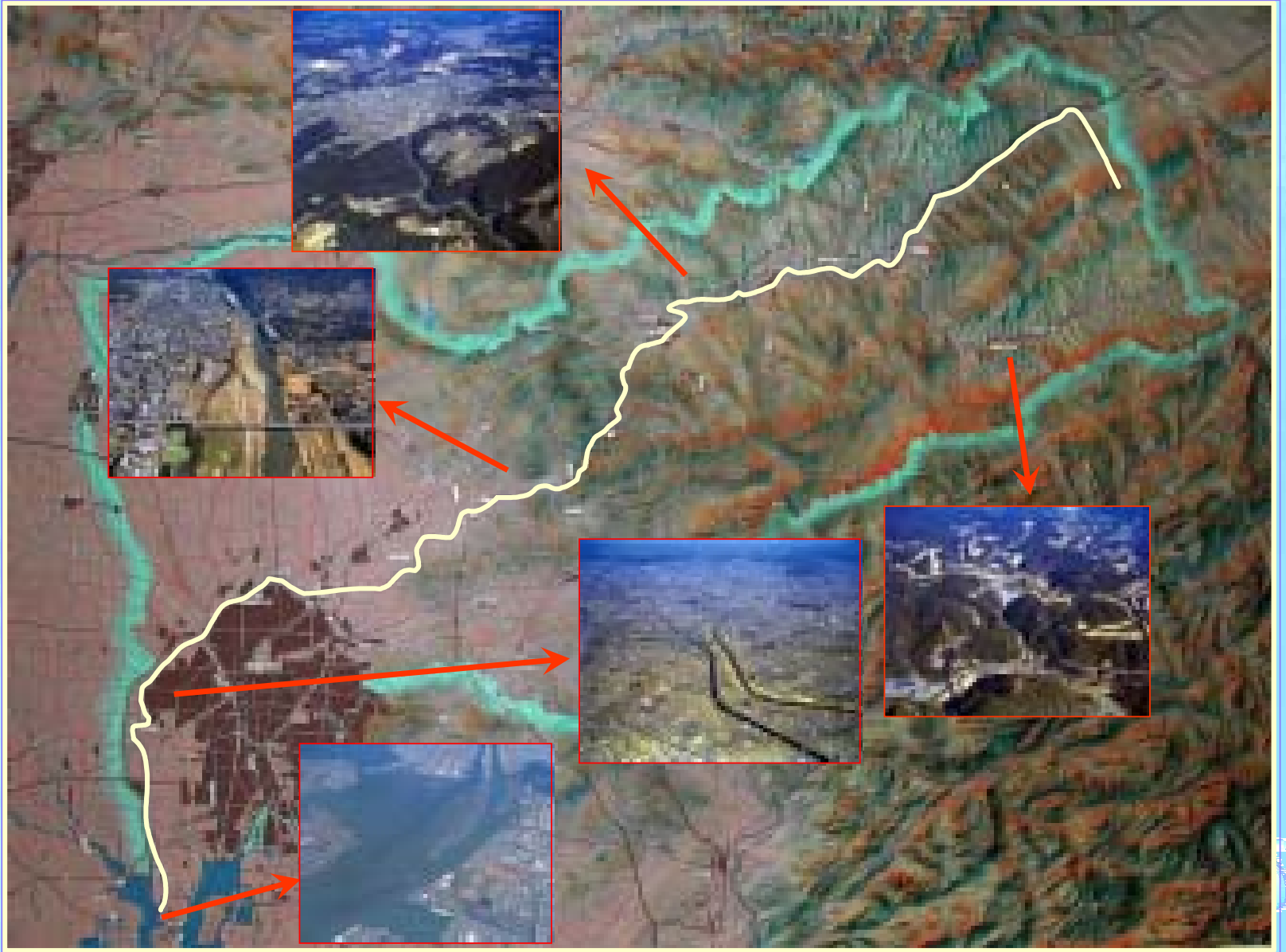


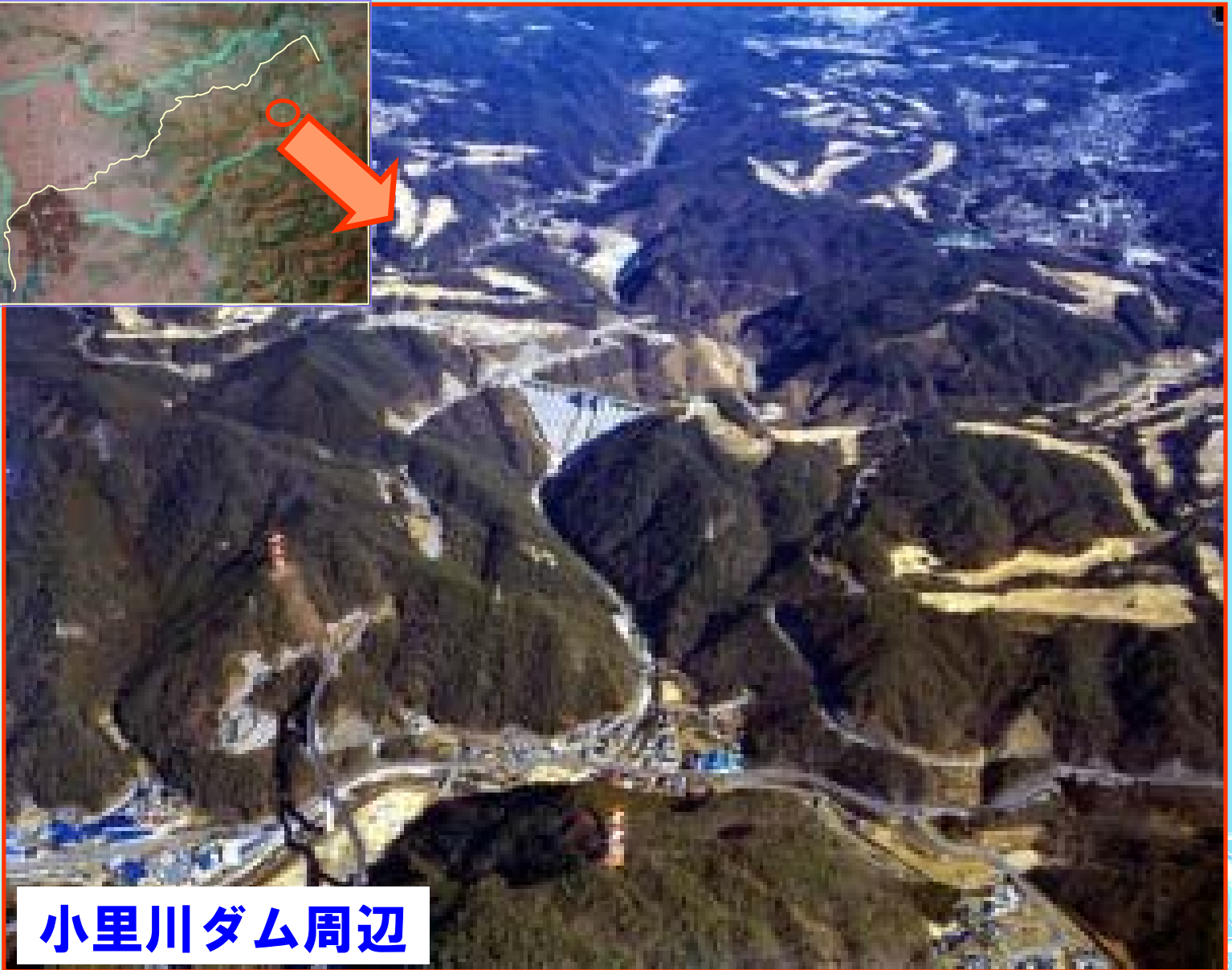
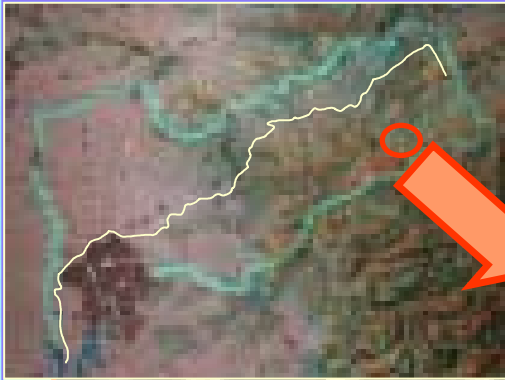


流路延長(本川)	96km
流域面積	1,010km ²
管理区間延長	73.98km

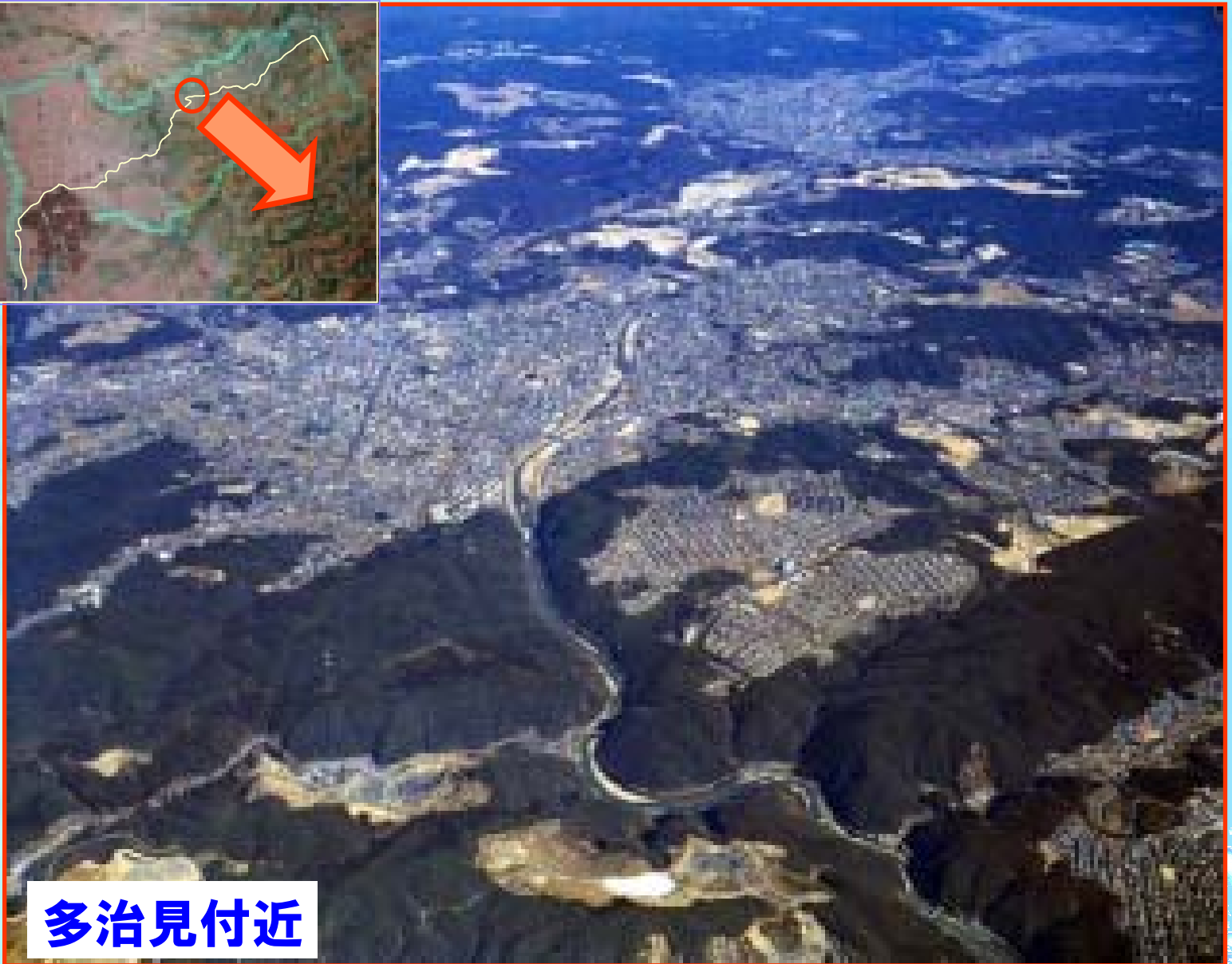
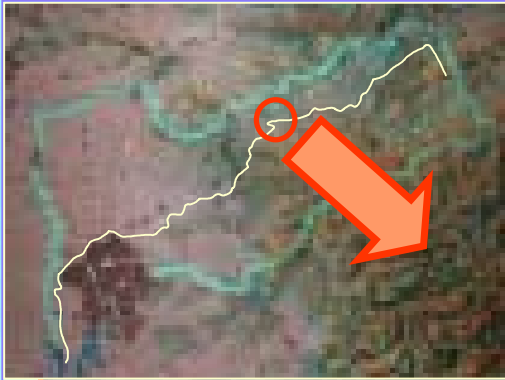
土岐川庄内川流域の様子





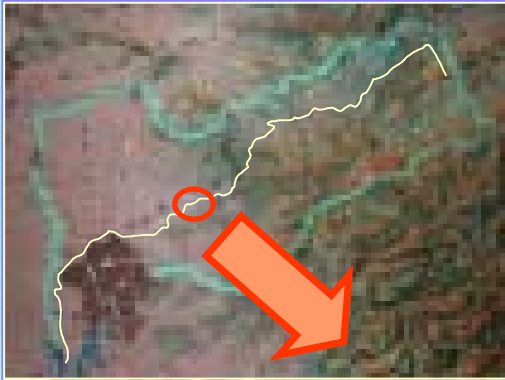


小里川ダム周辺

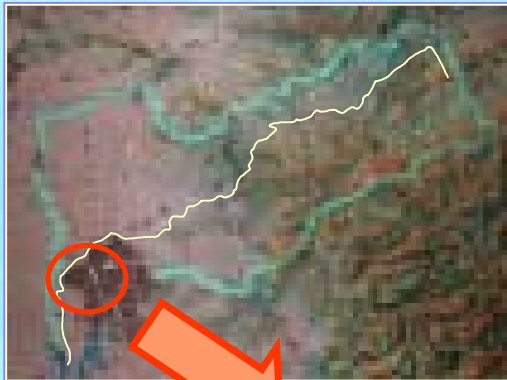


多治見付近





高蔵寺付近



名古屋市周辺

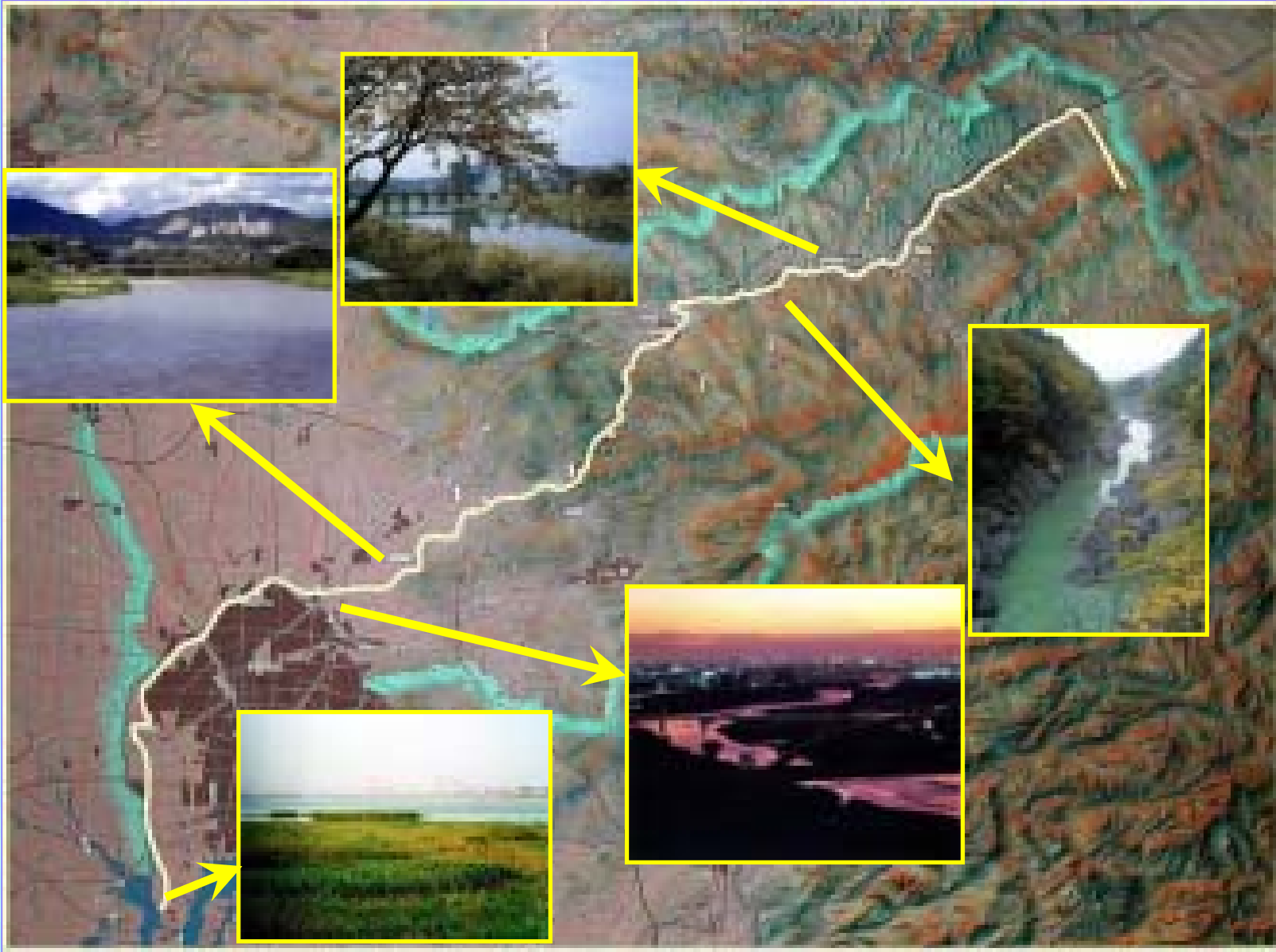


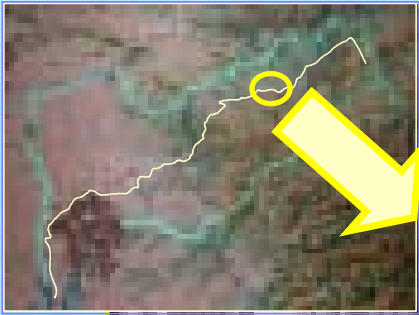


河口付近

土岐川庄内川の景観

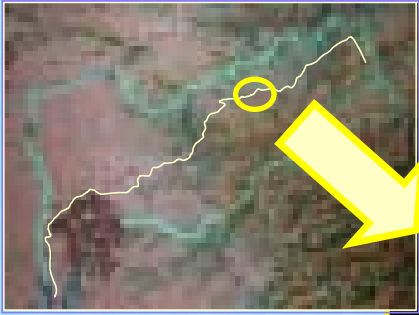






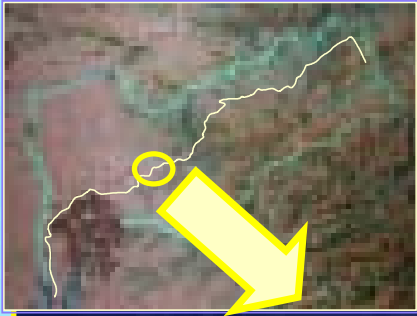
土岐津町付近





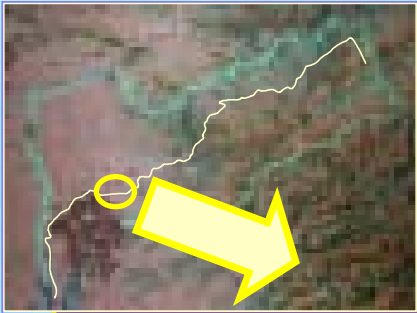
土岐の溪谷





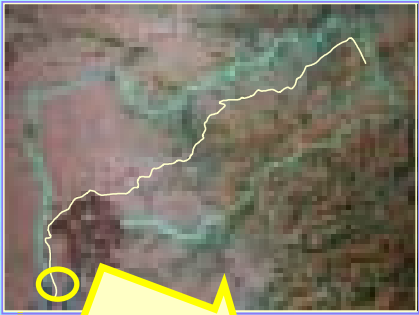
中志段味付近





守山区付近





ヨシ原