

Safely Enjoy the Waters of the Kiso River!!

A Guide for Everyone Enjoying Watersports

Follow the **rules** and be **safe** when enjoying activities like motor boating, jet skiing, and wind surfing.



Do not go near water intake structures!



Nagoya city water intake structure



Aichi prefecture water intake structure

Yield to ferries!



Nishinagano ferry

Gifu Prefecture

Usage area for motor boats & jet skis (powered vehicles)



Aichi Prefecture

Usage area for windsurfing, stand up paddle boarding, etc. (unpowered vehicles)



The number on the signs displayed on the bank indicate the distance from the river's mouth.



Tokai Ohashi Bridge

The area approximately 600 meters downstream from the Makai Ohashi Bridge is off limits!

- The areas upstream of the Kiso River Sluice Gate and around water intake structures are off limits, as they interfere with facility maintenance.
- The areas upstream from the Nobiohashi Bridge and downstream from the Makai Ohashi Bridge are off limits as the depth of the water is dangerously shallow.

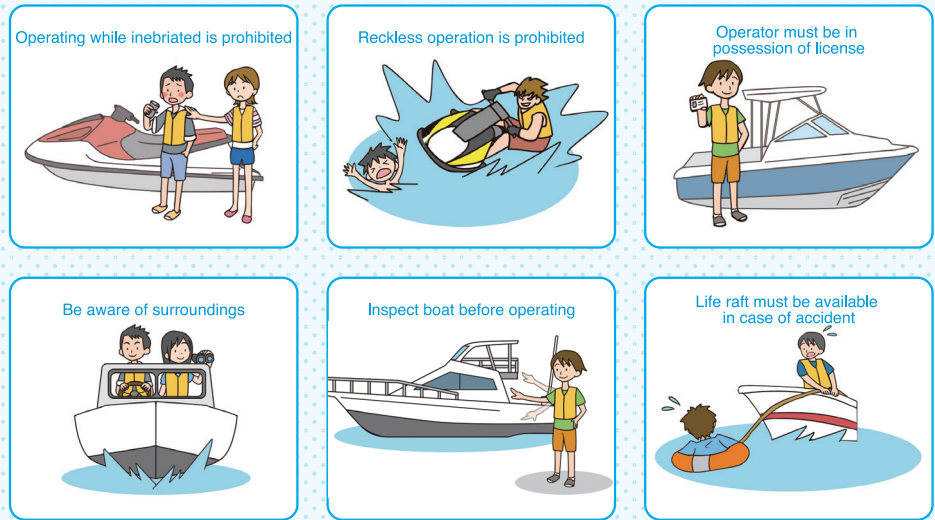


Not abiding by the rules will result in no longer being able to use the river

Warning

Rules for safe operation of small vessels (motor boats, jet skis, etc.)

Rules for safe operation of small vessels (motor boats, jet skis, etc.)
 Operation of small vessels without carrying a small vessel operation license corresponding to the vessel type, size, and embarkation area is prohibited. Be sure to acquire the required small vessel operation license.
 Also, in order to ensure the safe use of motor boats, jet skis, and other pleasure boats, the following safety precautions for the small vessel operator (captain) are established under the law.
 Please safely operate your vessel, abiding by the rules.



[In addition to the above rules]

- Do not operate in the middle of the night or early morning.
- Do not approach the Kiso River Sluice Gate or water intake structures.
- Do not approach large fishing vessels or fisherman. Maintain a wide degree of distance from these vessels.
- Do not hinder ferry operations.
- Do not use large motor boats or jet skis that are in a poor condition or have a loud exhaust.

- Always pay attention to safety, and maintain the safety of others on the river. Do not behave in a dangerous manner.
- Yield to others and do not be a nuisance to those on the river.
- Bring your trash back with you and work to keep the river beautiful.
- Keep damaged goods, dirty items, and disposables with you. Do not dispose or abandon them in the river.
- Treat the river respectfully.

• Breaking of laws for vessel employee and small vessel operators, vessel safety laws, river laws, ordinances, etc., may result in jail or

[Example]

- Operating small vessel without obtaining small vessel operation license... **Fine up to 300,000 yen**
- Vessel operator allowing individual without operation license to use vessel... **Jail up to 6 months or fine up to 1,000,000 yen**
- Vessel inspection certification documents, interim permission paperwork, or vessel inspection booklet are not on the vessel... **Fine up to 200,000 yen**
- Damage is done to river... **Jail up to 6 months or fine up to 300,000 yen**
- Dumping of earth, excrement, dead animals, other dirty items or disposables... **Jail up to 3 months or fine up to 200,000 yen**

• Not abiding by the rules may result in no longer being able to use the river in

Rules and fundamentals for maintaining the river's habitat and safely enjoying the river

Punishments for not following the rules...